

Orthographic Projection Test

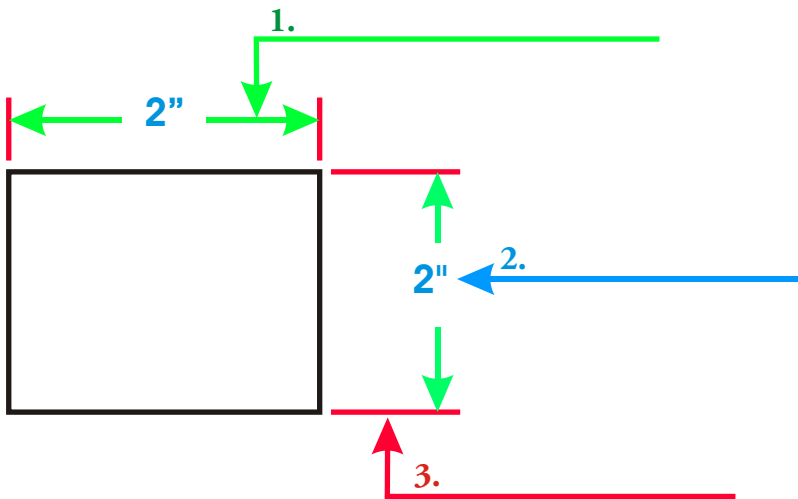
1. Write the Orthographic Projection drawing steps in the correct order (10 points)

Step 1. _____
 Step 2. _____
 Step 3. _____
 Step 4. _____
 Step 5. _____

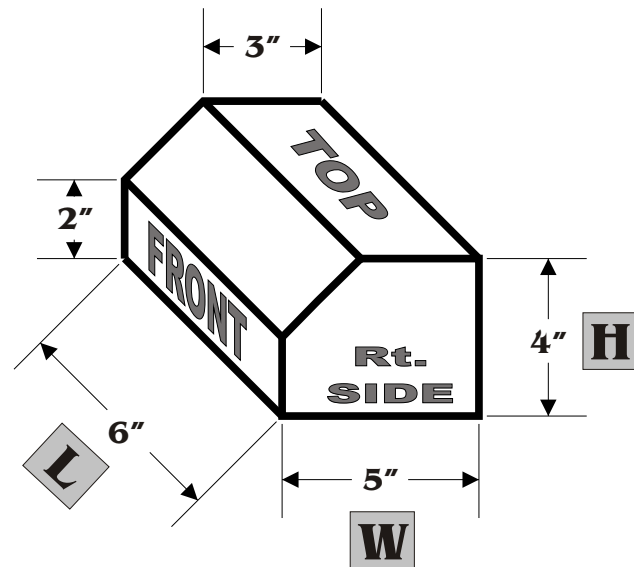
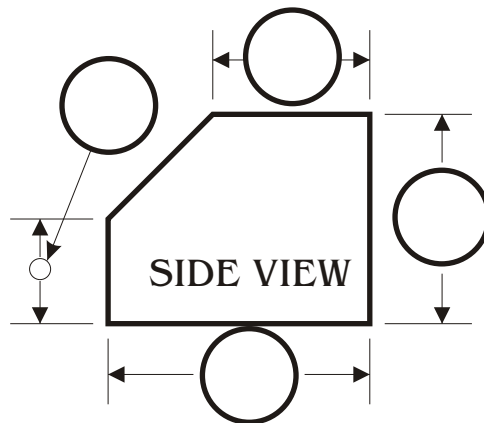
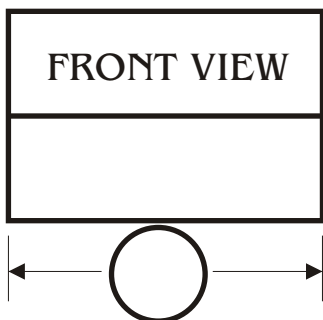
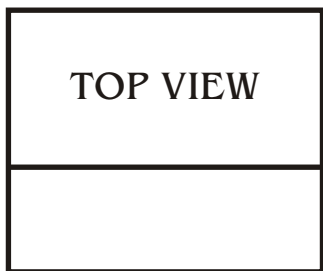
2. Fill in the following chart (10 points)

Blocks	Inches
1	
2	
3	
4	
5	
7	
9	
11	
13	
48	

3. All dimensions have 3 parts, label the parts below (10 points)



4. Fill in the dimensions for the following drawing (10 points)

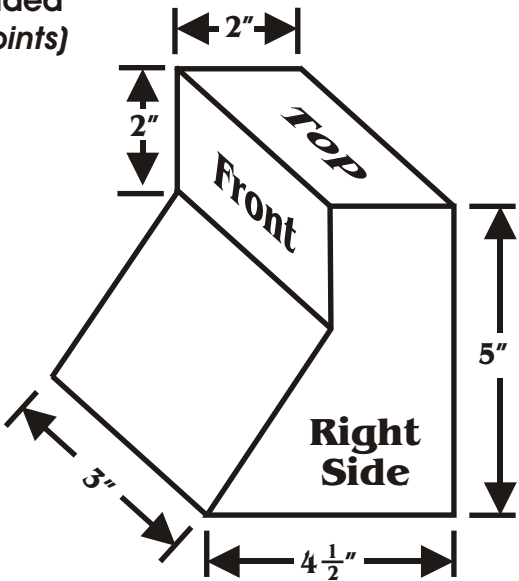
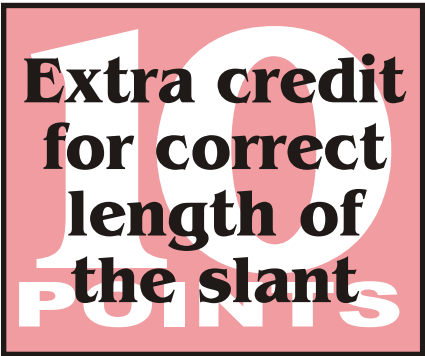


5. Answer the following questions about the shape provided (10 points)

What is the overall length? _____.

What is the overall width? _____.

What is the overall height? _____.

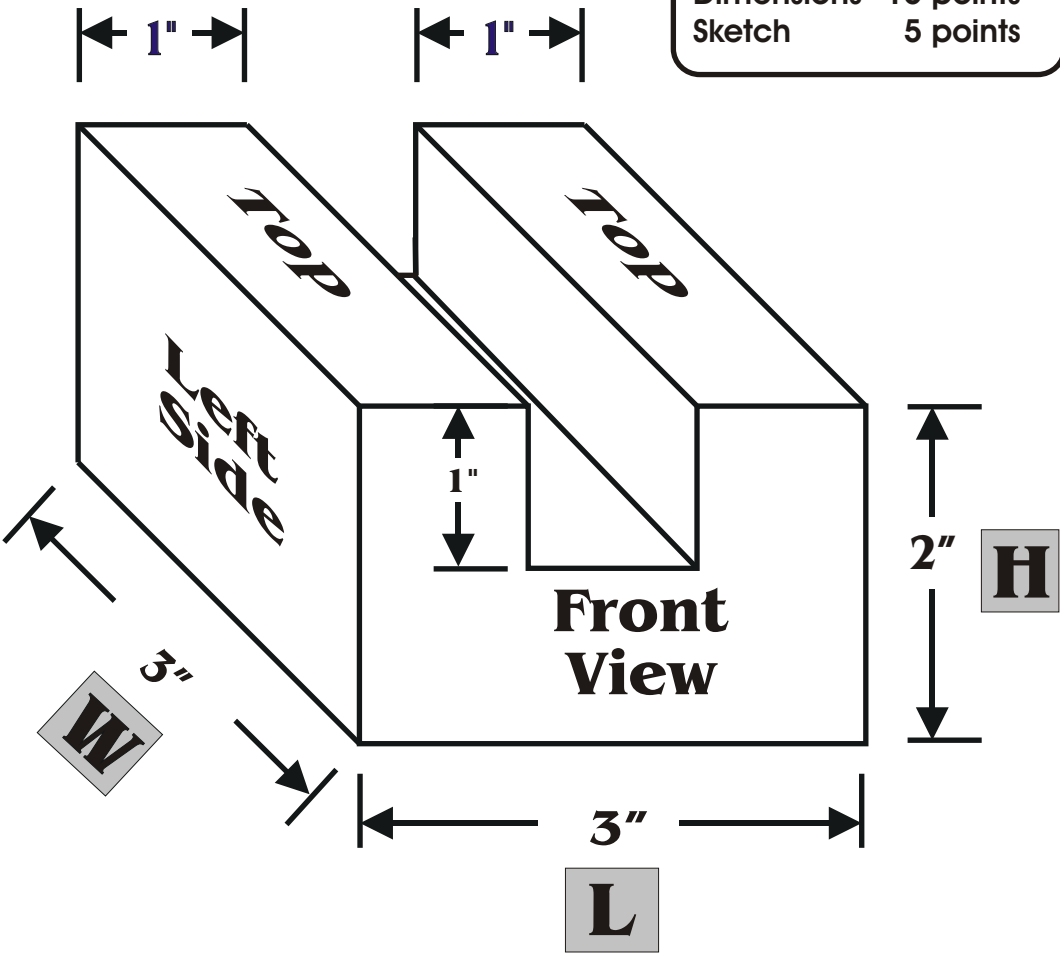


6. Draw the following shape on the graph paper provided. You may use your notebook and all drawings as a resource. (50 points)

HINT: The sketch will not fit if the sketch box full size, therefore you must draw it half scale.

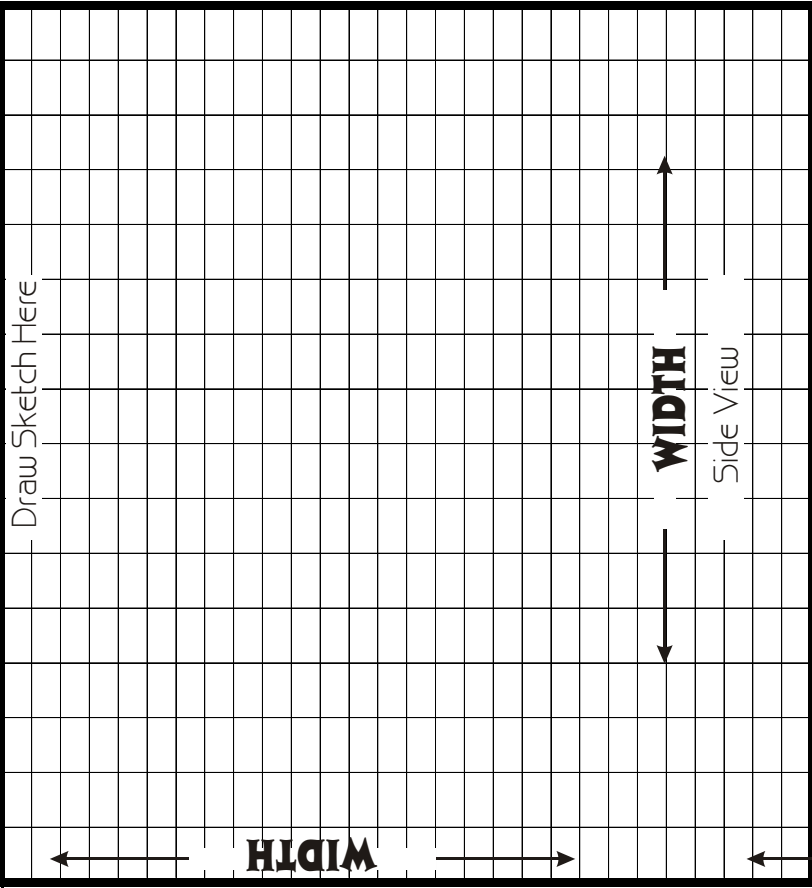
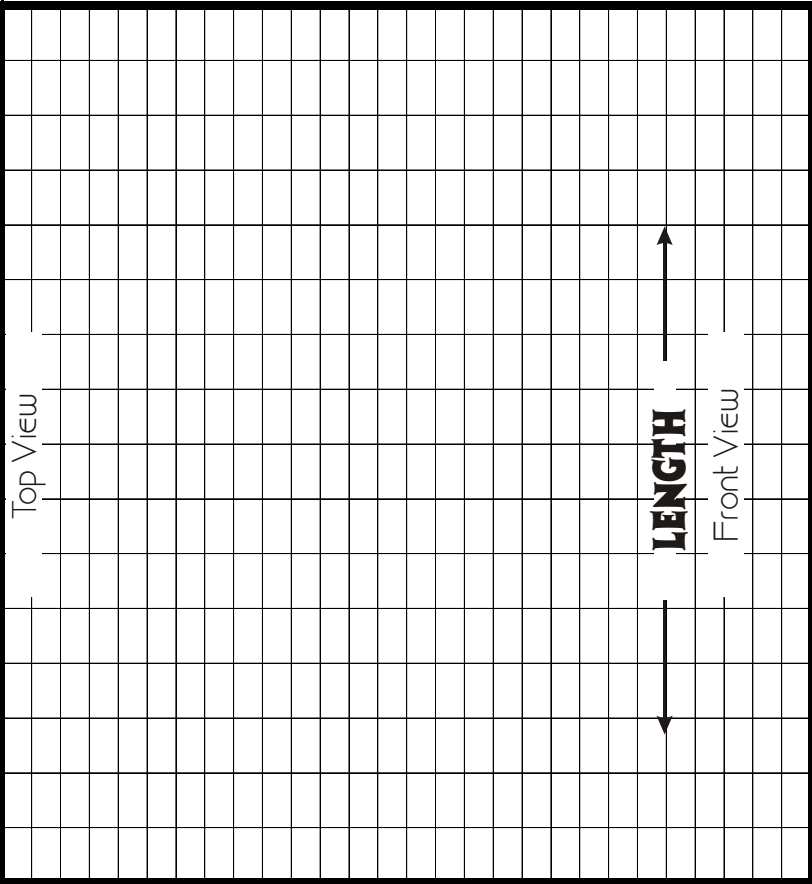
Use this scale:
1 block = 1/2"

Front View	10 points
Top View	10 points
Side View	10 points
Dimensions	15 points
Sketch	5 points



Drawing scale: each square = _____

Name _____



Title _____

